



Altek Group Conference in 2021

Altek Group | Institutional investors 2021

STEVEN CHEN

altek

Better Vision · Better Life

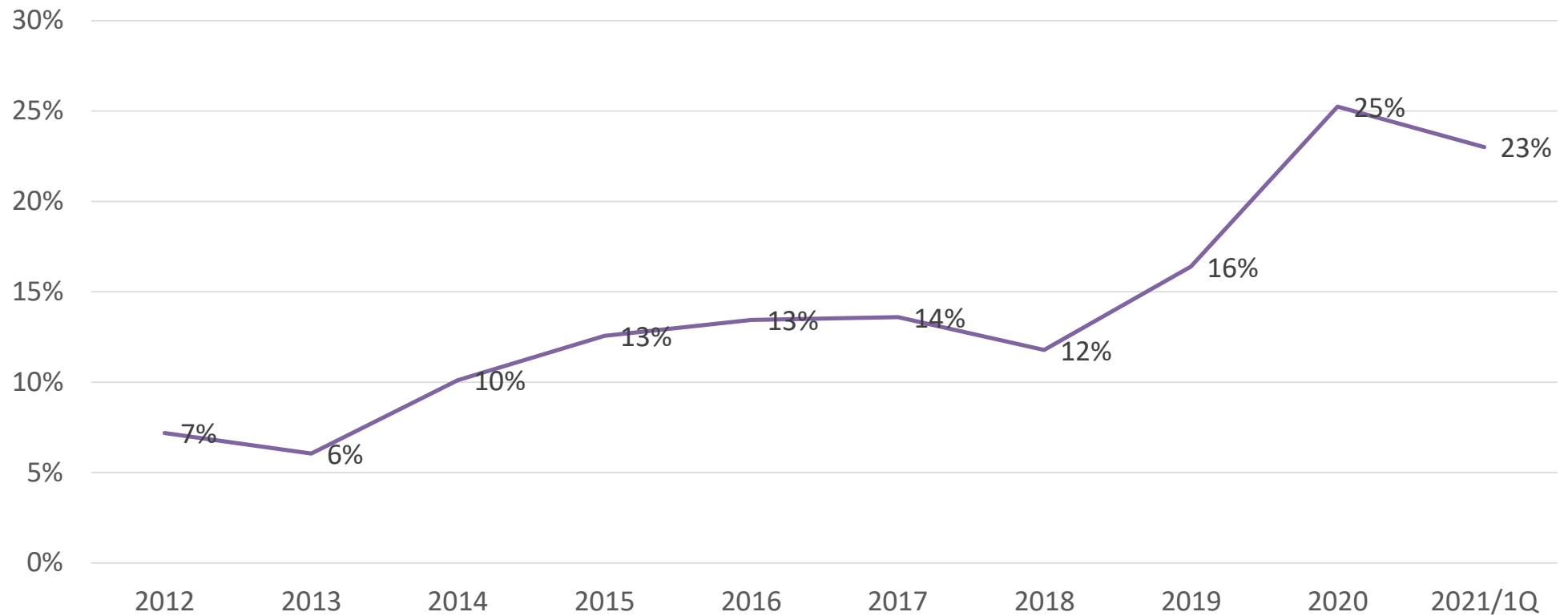
1Q Consolidated Financial Report



NTD/K

| Item | 2021/Q1 | | 2020/Q1 | | Variance |
|---|----------------|-----------|----------------|-----------|----------------|
| | Amount | % | Amount | % | |
| Revenue | 1,980,863 | 100 | 1,113,743 | 100 | 867,120 |
| Operating costs | (1,525,172) | (77) | (843,960) | (76) | (681,212) |
| Operating Margin | 455,691 | 23 | 269,783 | 24 | 185,908 |
| Operating Exp. | (427,594) | (22) | (299,795) | (27) | (127,799) |
| Operating profit (loss) | 28,097 | 1 | (30,012) | (3) | 58,109 |
| Non-operating income and expenses | | | | | |
| | 39,689 | 2 | 41,784 | 4 | (2,095) |
| Profit before income tax | 67,786 | 3 | 11,772 | 1 | 56,014 |
| Income tax | (26,983) | (2) | (13,238) | (1) | (13,745) |
| Net Income or Loss | 40,803 | 1 | (1,466) | - | 42,269 |
| Profit (loss), attributable to the parent | | | | | |
| | 31,438 | 1 | 31,464 | 3 | (26) |
| Profit (loss), attributable to Non-controlling interest | | | | | |
| | 9,365 | - | (32,930) | (3) | 42,295 |
| Earnings per share | 0.12 | | 0.12 | | |

Gross Margin Trend



Altek Group

Altek Corporation



ADAS

Lens for Smart Car & AIoT

Altek Semiconductor



ASIC

ISP & AI Chip

Altek Biotechnology



Medical

Insulin Pump and
Disposable endoscope

Altek KunShan



Precision Manufacturing

Altek Group | The History of Development



ISP Algorithm 20years+



Auto Lens 15 years+



Medical 10 years+

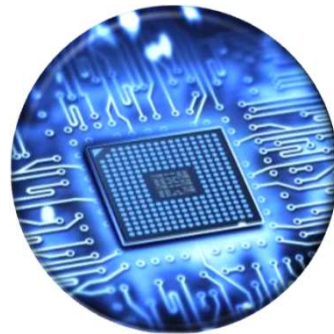


AI Chip 6 years+

Optical Image
25years+



ASIC IC 20years+



Robotic 9 years+



5G / AIoT



Altek Group | Technology Innovation: DREAM

Digital Camera

Robotics

Electric Vehicle

ASIC

Medical Device



ISP Processing

- Digital camera to AI Cam
- Smart Phone
- Automotive Cam
- AI Cam/ Webcam

3D Sensing

- AL 6100 Chip
- Logistic Robots
- Delivery Robots
- Voice Control Robots

ADAS

- AIoT | Qualcomm
- AI Fleet Management
- DMS AI Cam

Chip Design

- AI Algorithm
- ISP Chip
- ASIC Design
- RTL & SW IP Develop.

Precision Medicals

- Glucose Meters
- Insulin Pump
- Disposable Endoscope

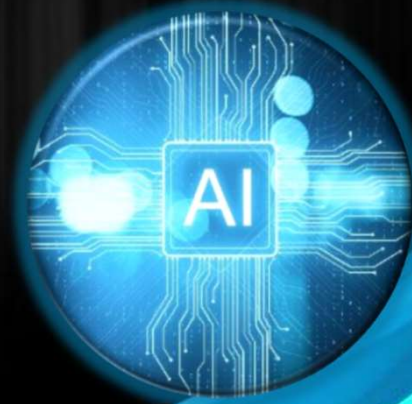
Automotive



Biotechnology



Chip



Altek | ABC Ecosystem

altek

Better Vision · Better Life

Altek Ecosystem | Better Vision · Better Life

altek
Better Vision · Better Life

Automotive



Biotechnology



Chip



altek

Better Vision · Better Life

Ecosystem



altek Imaging expert





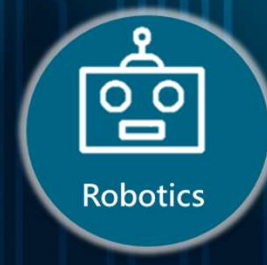
Automotive | Lens for Smart Car

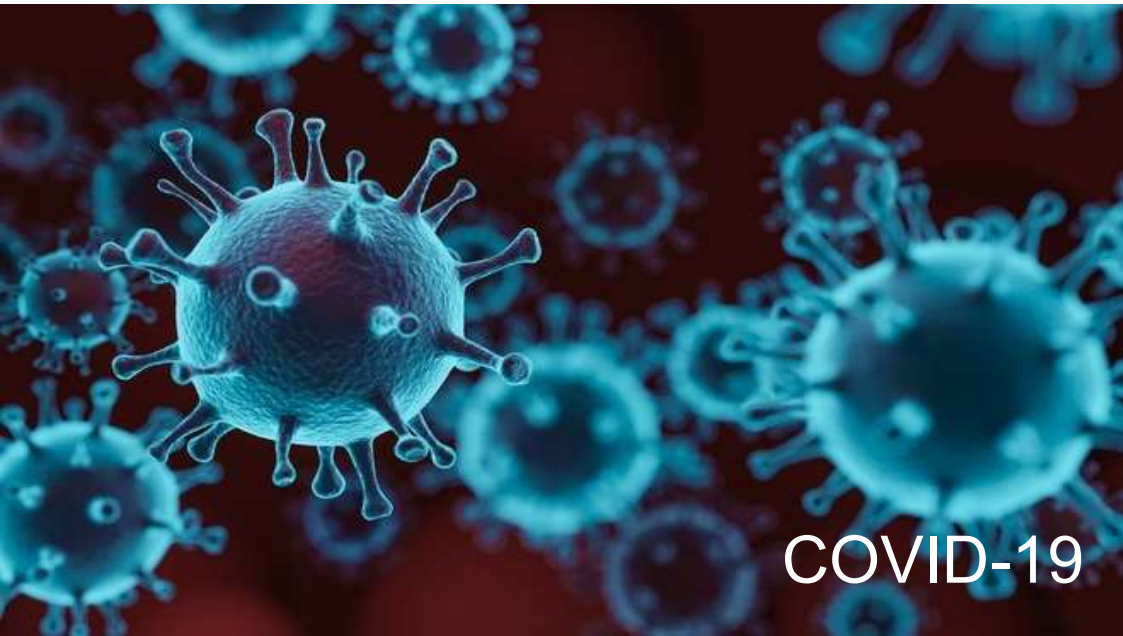
altek

Better Vision · Better Life

The Lowest Power AI Chip In The World

altek
Better Vision · Better Life





COVID-19

The Largest disposable
endoscopes provider.



Biotechnology | Disposable Endoscopes



altek

Better Vision · Better Life



Altek 's customer has just been selected as **the only** disposable endoscopes provider in one of the America's largest Healthcare Group Purchasing program.

- Broncho Endoscope 支氣管鏡
- Gastroenteroscope 腸胃鏡
- RhinoLaryngo Intervention 咽喉鏡
- Choleidoscopy 膽鏡
- CystoScope 膀胱鏡
- Duodeno 十二指腸鏡

altek
Better Vision · Better Life



A white unicorn stands in a forest at night, illuminated by blue and orange lights. The unicorn is positioned in the lower center of the frame, facing left. The forest is dark, with tall trees and some foliage illuminated by warm orange and yellow lights on the left and right sides. Blue light rays or beams of light emanate from the background, creating a magical atmosphere. The overall scene is a composite image designed for a brand logo.

altek

Better Vision · Better Life

Q & A

THANK YOU