

Altek Group (3059) 4Q Conference

2019-12-06

altek

Safe Harbor Notice

- Altek Group statement of its current expectations are forward-looking statements which are subject to significant risks and uncertainties. Actual results may differ materially from those contained in any forward-looking statements.
- This information has been prepared in accordance with International Accounting Reporting Standards IFRS

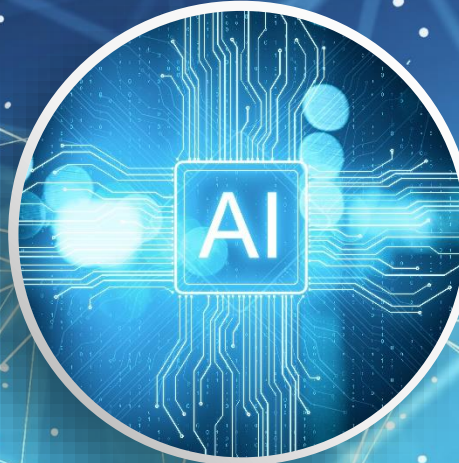
AI Camera



3D Sensing



AI Chip



Medical Device



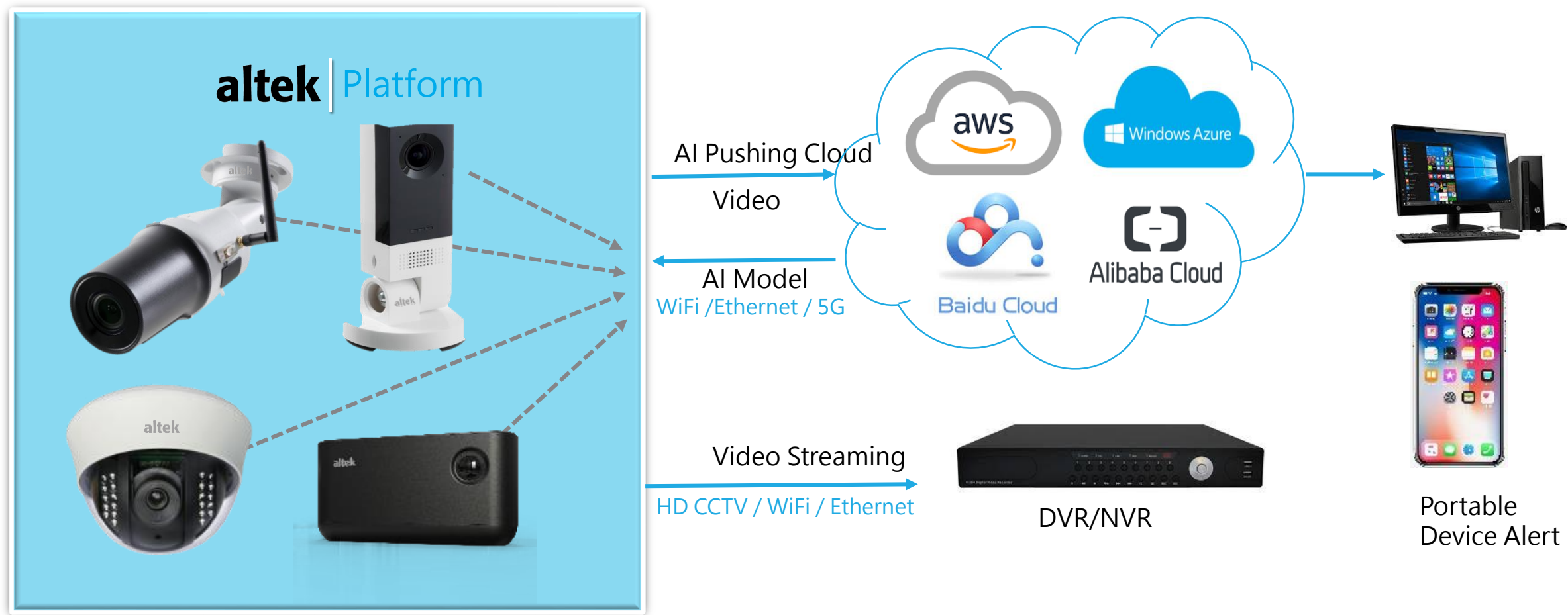
ADAS



Altek Product Lines

altek

AI Camera



AI Camera | WiFi / Ethernet

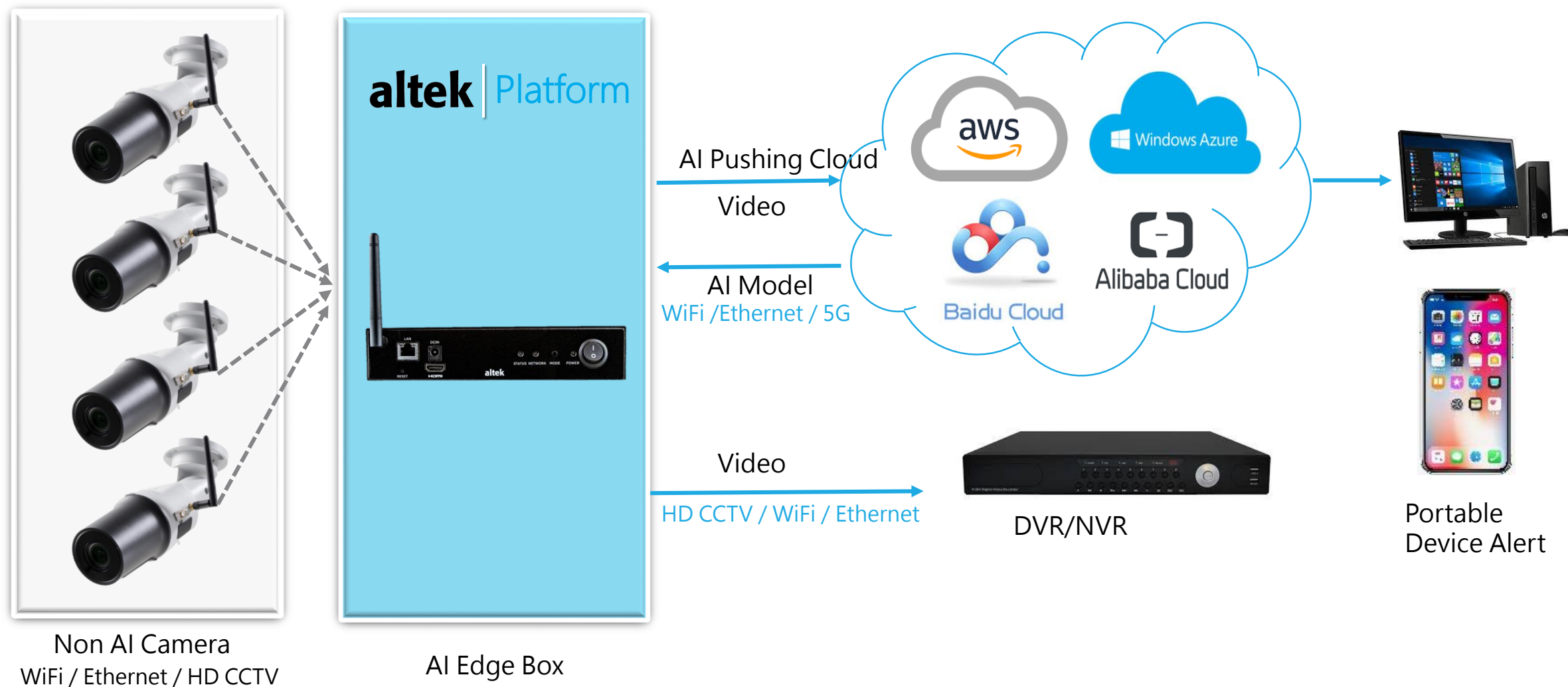
Edge AI Box



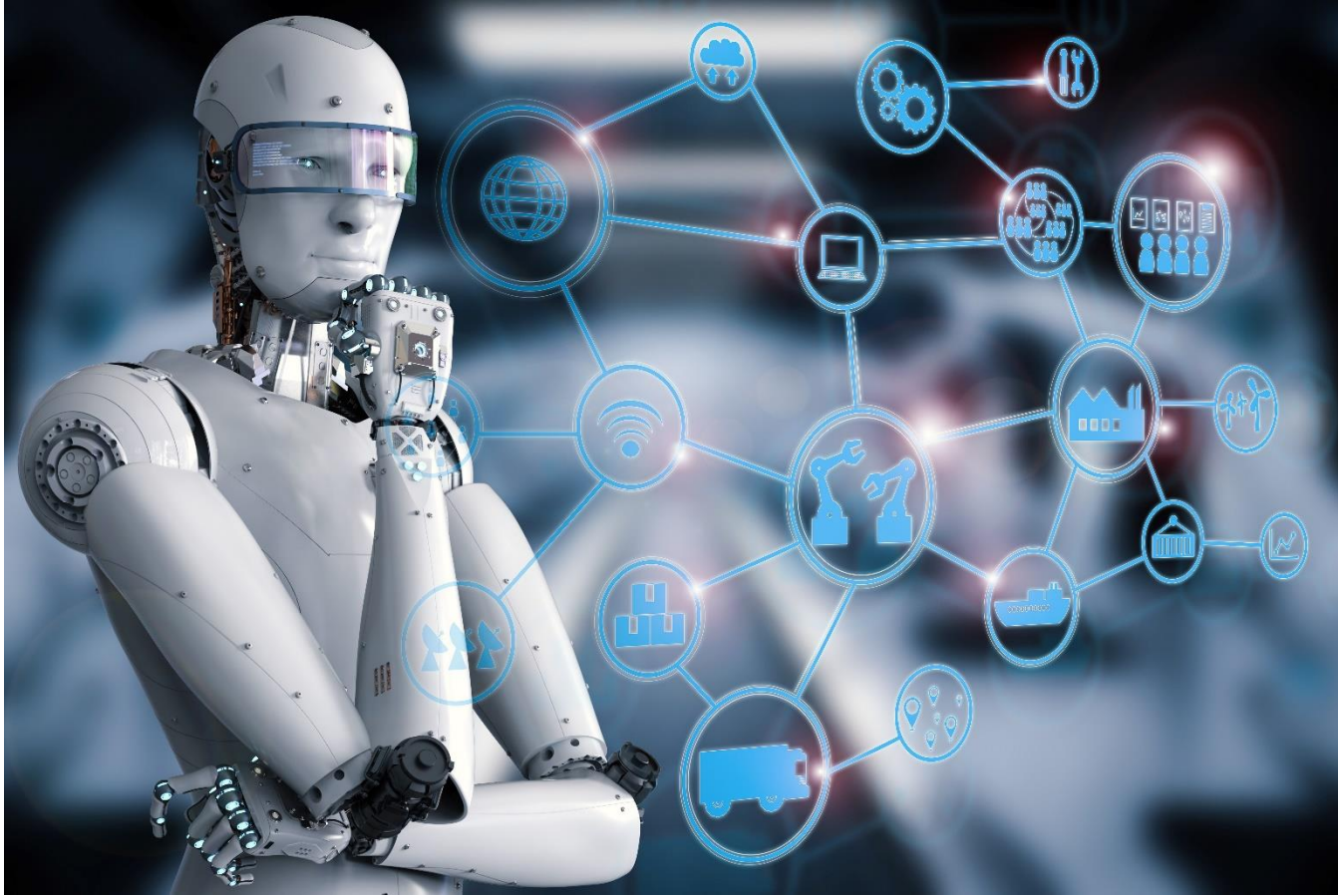
QCS603 Linux
4 x WiFi Camera
input
WIFI 802.11ac

- AI upgraded for non-AI camera systems
- Support 4-way camera connection
- Support for Microsoft Azure and Amazon AWS Cloud Connect
- Altek provides customized order according to customer needs

AI Edge Box schematic diagram



3D Active Stereo Sensing Chips & Modules **altek**



Altek has been developing 3D sensing technology for many years, providing a variety of 3D sensing modules for all kinds of robots, Augmented Reality (AR)/Virtual Reality (VR) device applications, advanced security monitoring devices, and people. Face recognition advanced payment system and other 3D sensing requirements, from module to chip from software and hardware integration solution, committed to the development of 3D sensing module ecosystem,

3D Sensing Chip, Module with Application

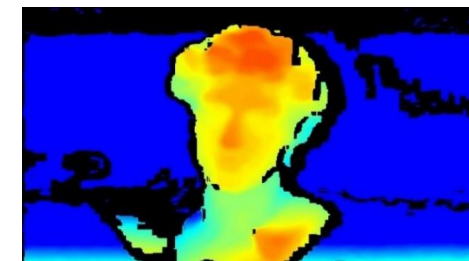
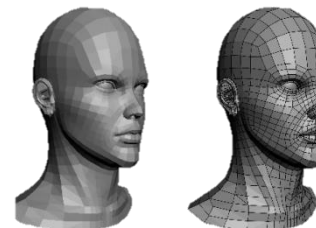
▼ Generate real-time depth maps through 3D sensor modules



3D Sensing Module



3D Sensing Chip



Real-time depth map

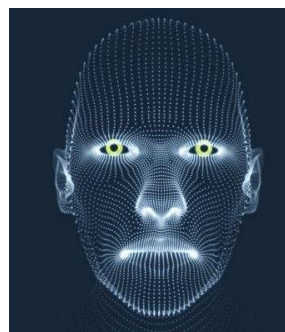
Face ID Unlock



VR/AR



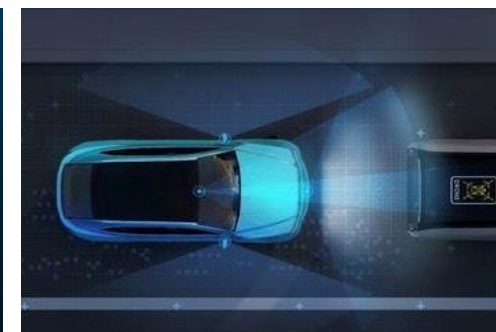
Space Scanning



3D Facial modeling

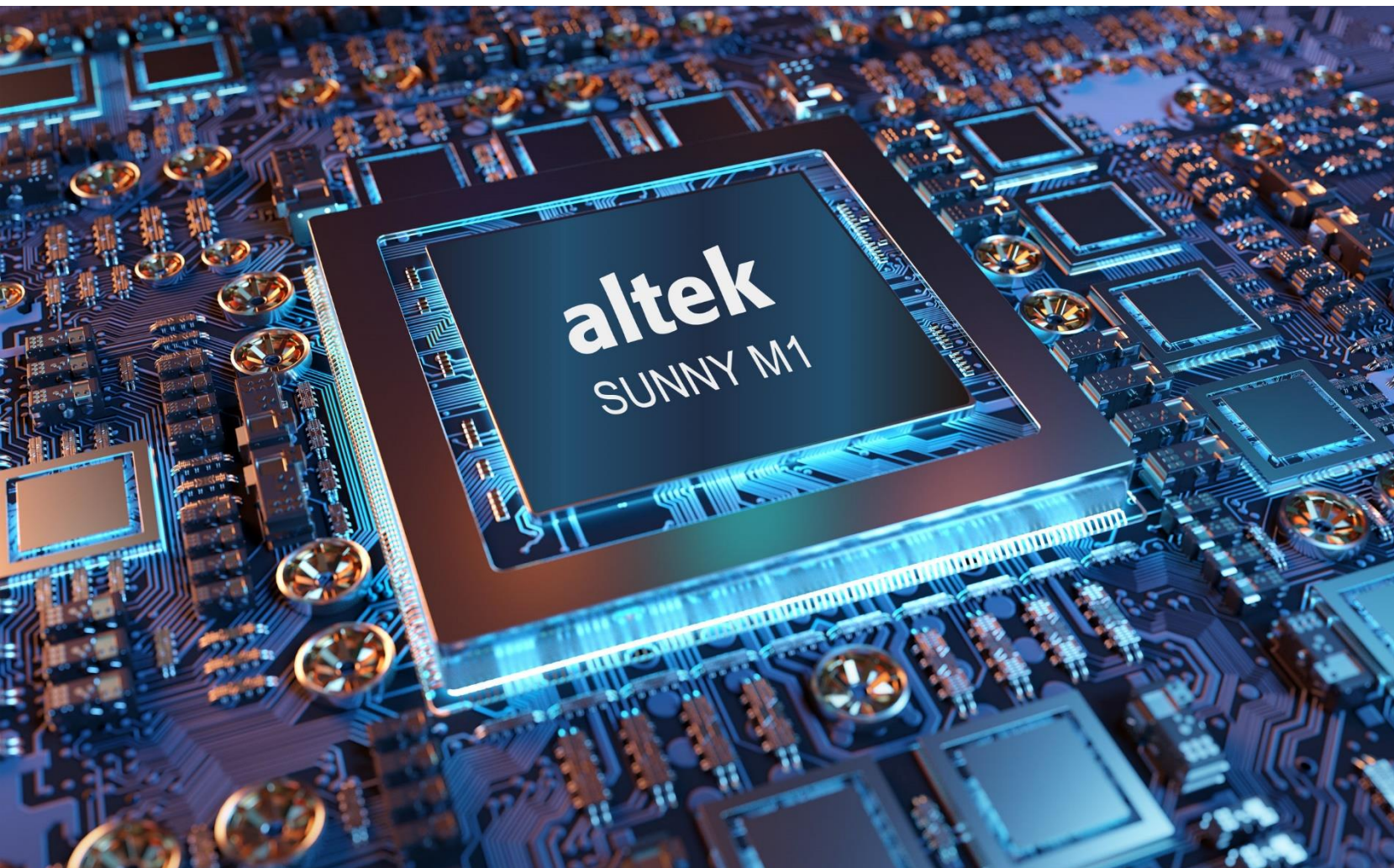


Gesture Recognition



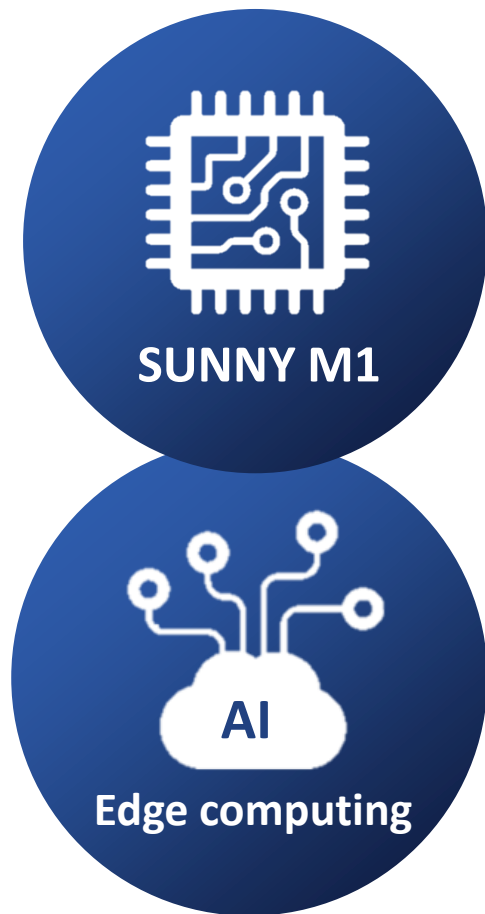
Obstacle detection

Altek Low-Power AI Chip M1



Launched in Oct/2019

SUNNY M1 Product advantages | Ultra low power **altek** omni-directional AI chip



SUNNY M1 AI 芯片

1

Ultra Low Power : Small size, computing power up to 0.5TOPS, minimum power consumption 10mW, average power consumption is only 300mW

2

Companion Chip : It can be used as a companion chip processor of the main system to increase the AI computing capability of the system without replacing the main chip.

3

ISP : The built-in image ISP can be directly connected to the lens module for autonomous calculation.

4

High compatibility : It has multiple advantages such as specifications, performance, and power consumption, and is fully compatible with various lens modules.

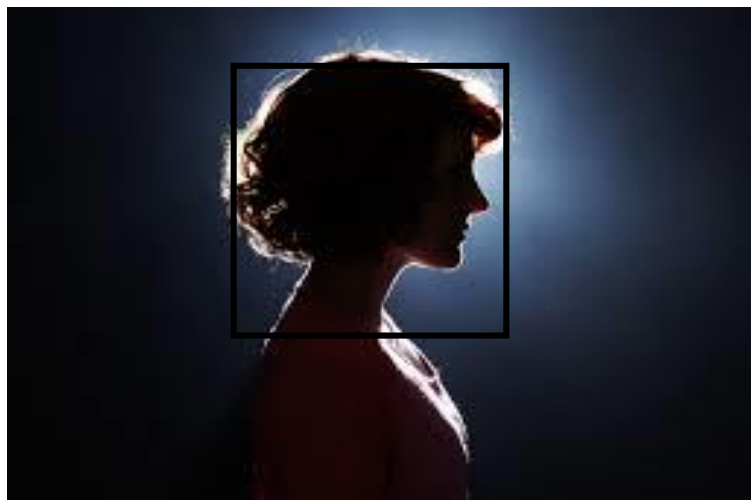
5

Multi-application field : Widely used in smart factories, intelligent security, smart home, access control, license plate recognition, robots, aerial cameras, home appliances and toys.

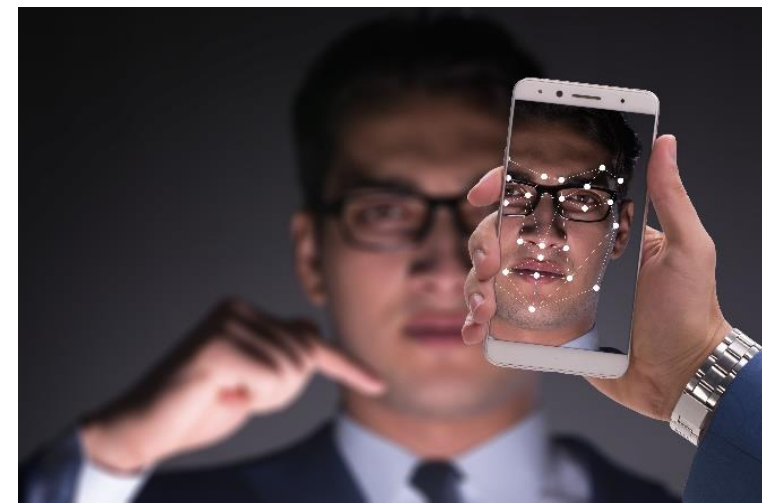
Human/face detection



Back condition



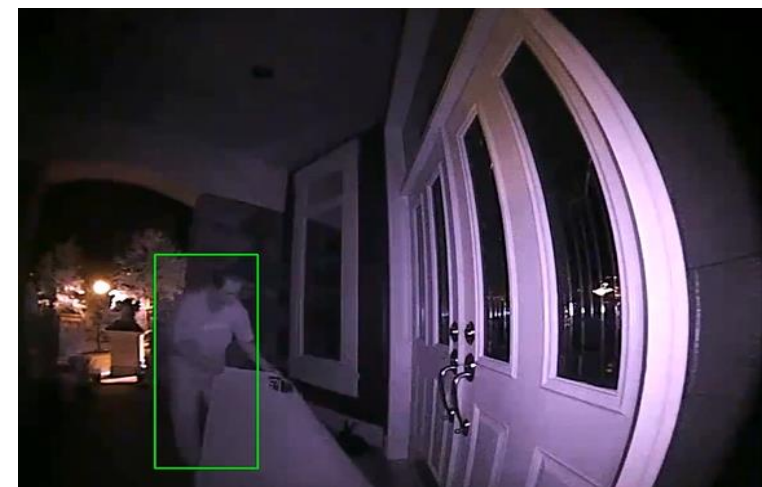
High contrast backlight condition



Side condition



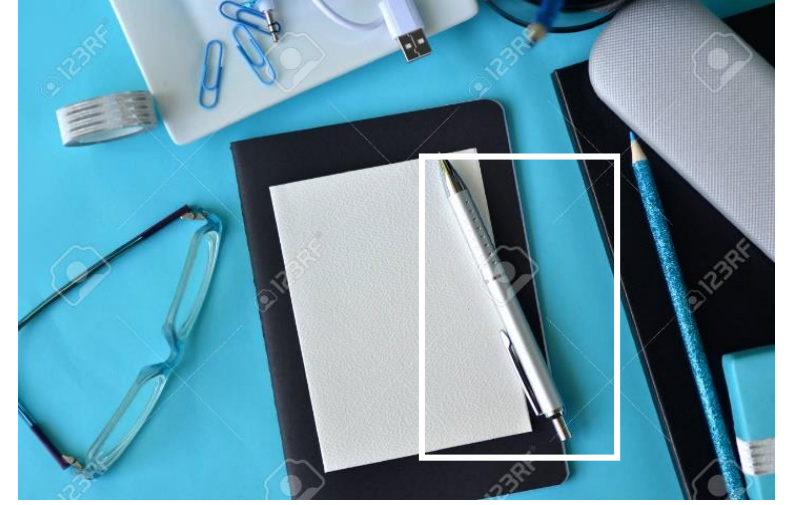
Fisheye distorted condition



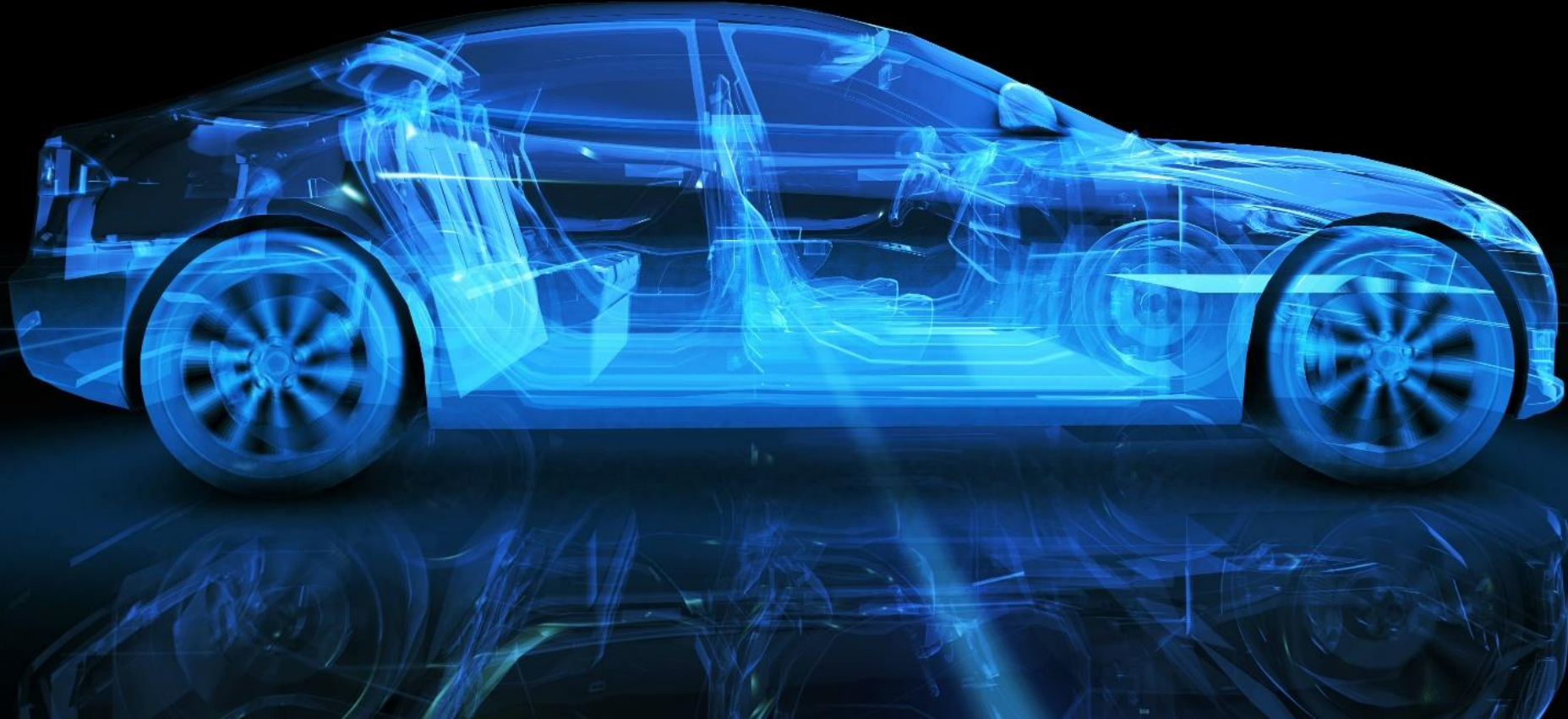
Very dark condition

Object Detection

altek



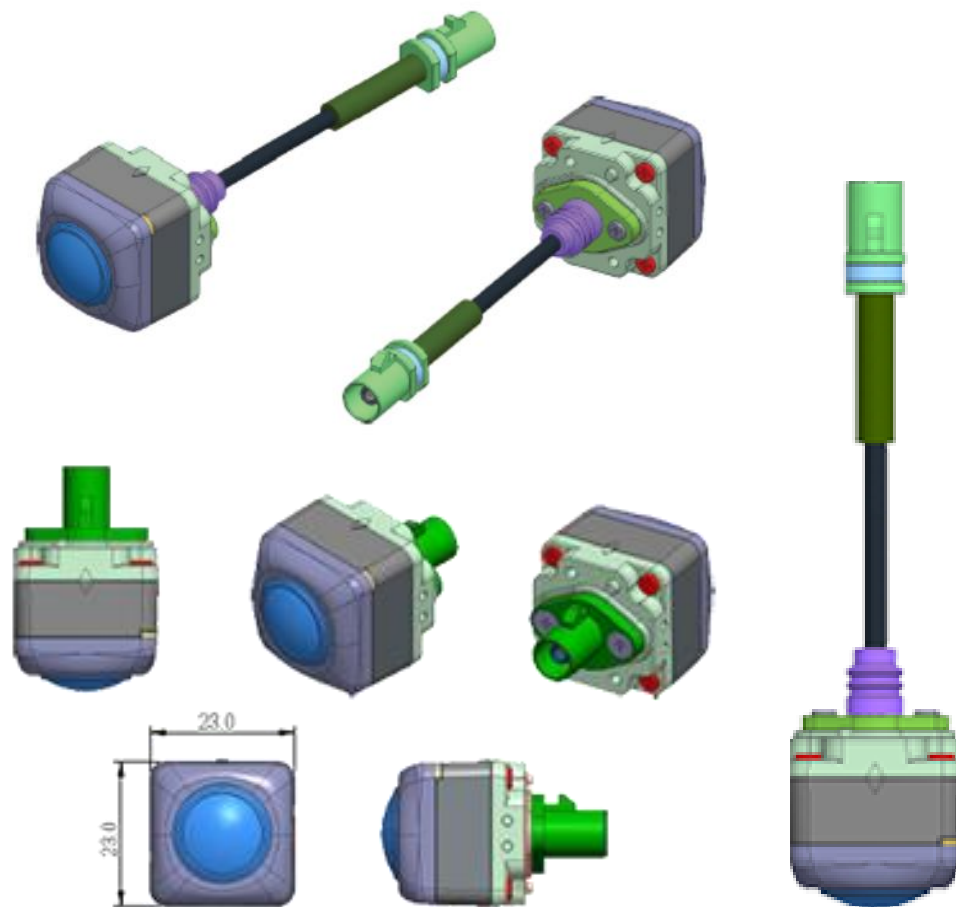
Automobile Camera System



altek

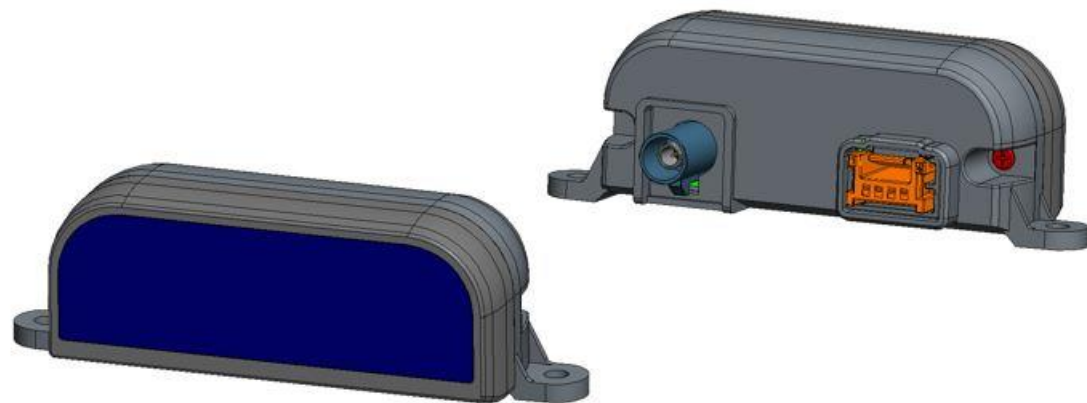
Security Image Assist System | Megapixel HD Digital Camera

altek



- Megapixel high-definition digital output camera for 360-degree HD surround view system and reversing image assist
- Fare coaxial output can choose Adapter Type or Tail Type
- Size is only 23x23x23mm
- The highest waterproof rating IP69K

DMS Infrared camera | IR Camera



- Infrared camera (IR Camera) with megapixel high-definition digital output for driver monitoring system (Driver Monitoring System ; DMS) .
- With the 940nm infrared LED, you can not only clearly see the driver in the dark, but also easily see the eye movement under the sunglasses.

Medical imaging



Altek has entered the field of medical electronics and obtained the designated OEMs of international medical brand manufacturers, such as blood glucose machines, intelligent insulin injection systems, and disposable endoscopes. Continuous development of miniaturization, low energy consumption, wireless and other features, combined with the application of digital imaging technology, to provide the best medical imaging solutions.

Advanced medical product solutions



High-end blood glucose machine

The optical lens motor precision control technology is applied to the design of the cassette blood glucose machine to reduce product complexity and improve product reliability.



Intelligent insulin injection system

The Android open platform provides an informative and fluent user interface, and with a complete risk management design, the overall system meets the security requirements of medical regulations with the cooperation of hardware and software.



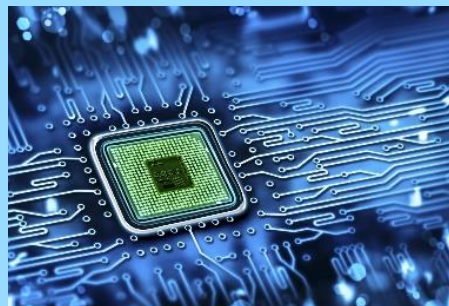
Disposable endoscope

Using the image processing core technology that was familiar with the past, the algorithm, the self-made image processing chip and the production line are adjusted to achieve image optimization and maintain the quality of the shipment, so that the disposable endoscope can achieve the image quality of the traditional endoscope level.

Altek Turn-Key Service



Image processing algorithm



ASIC chip design



Image processor

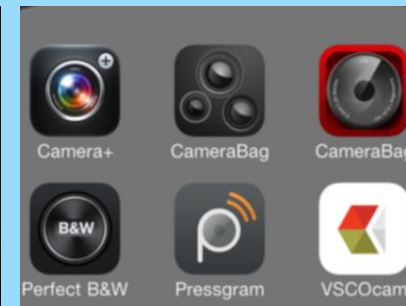


Image APP

One stop shopping

Turn-key Service



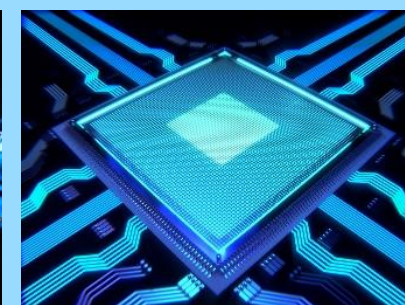
Lens



Lens module



Precision mold



SMT



Manufacturing assembly



Quality control



System integration

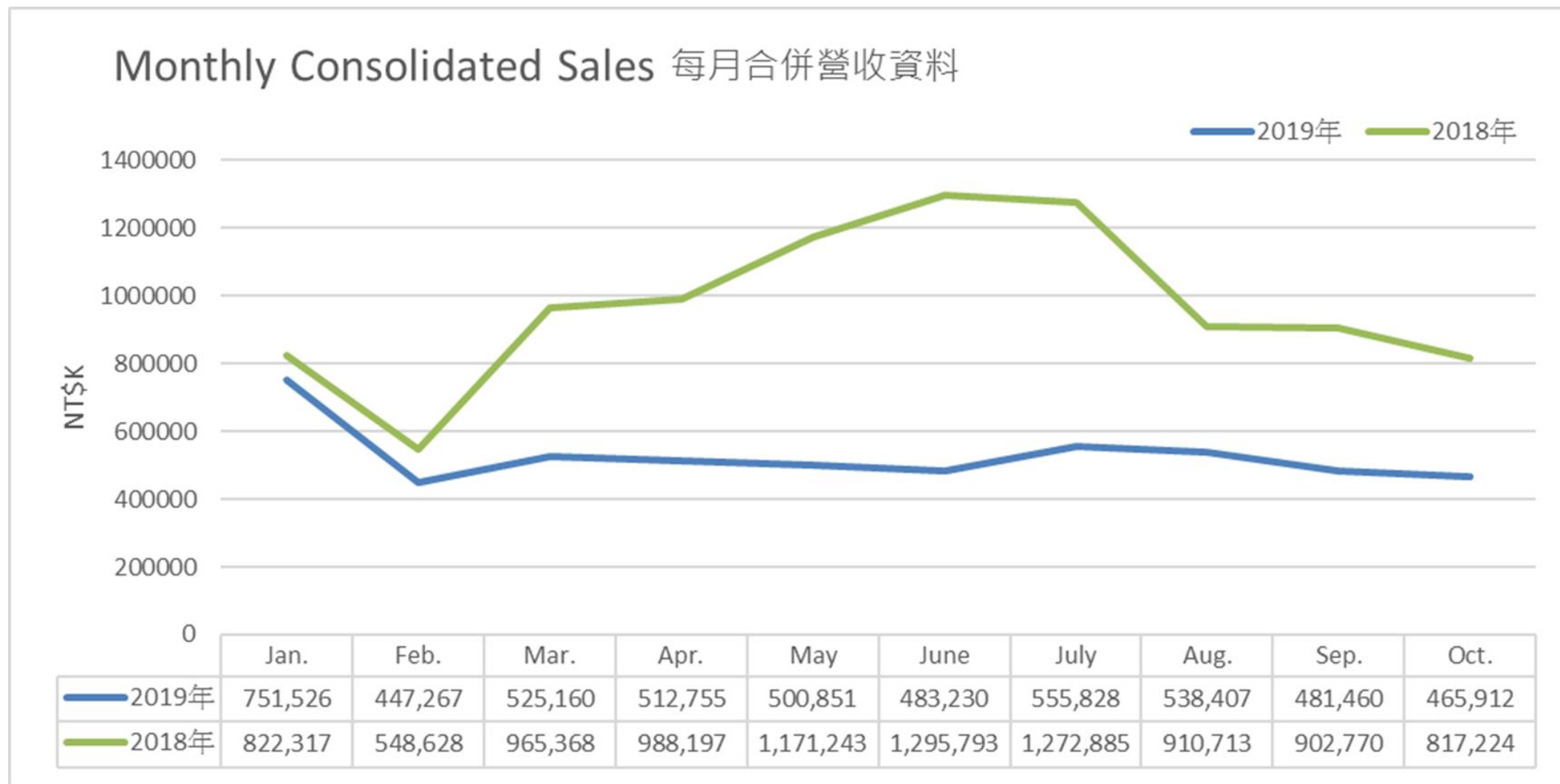


Flexible Service

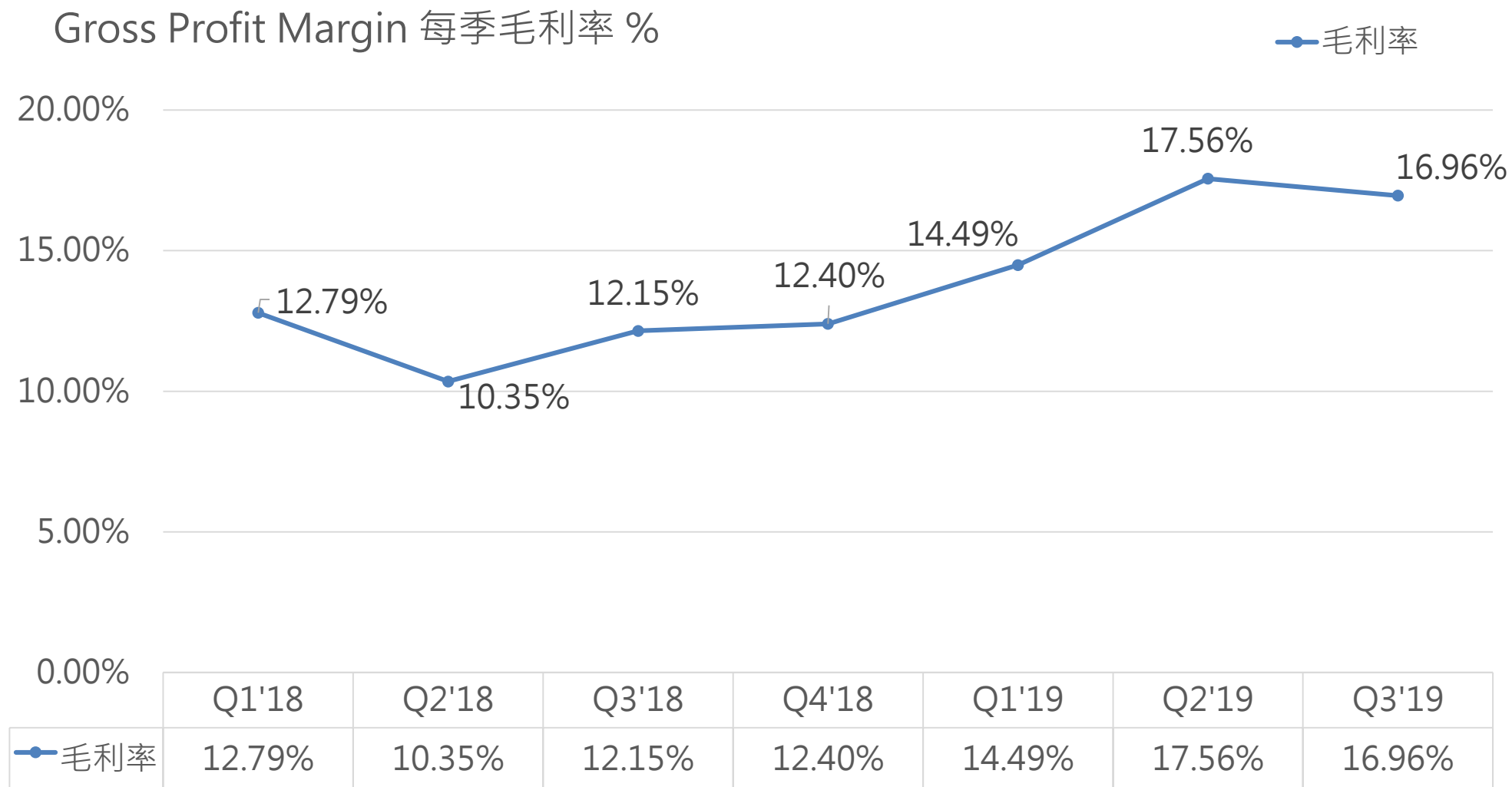
Altek Financials

altek

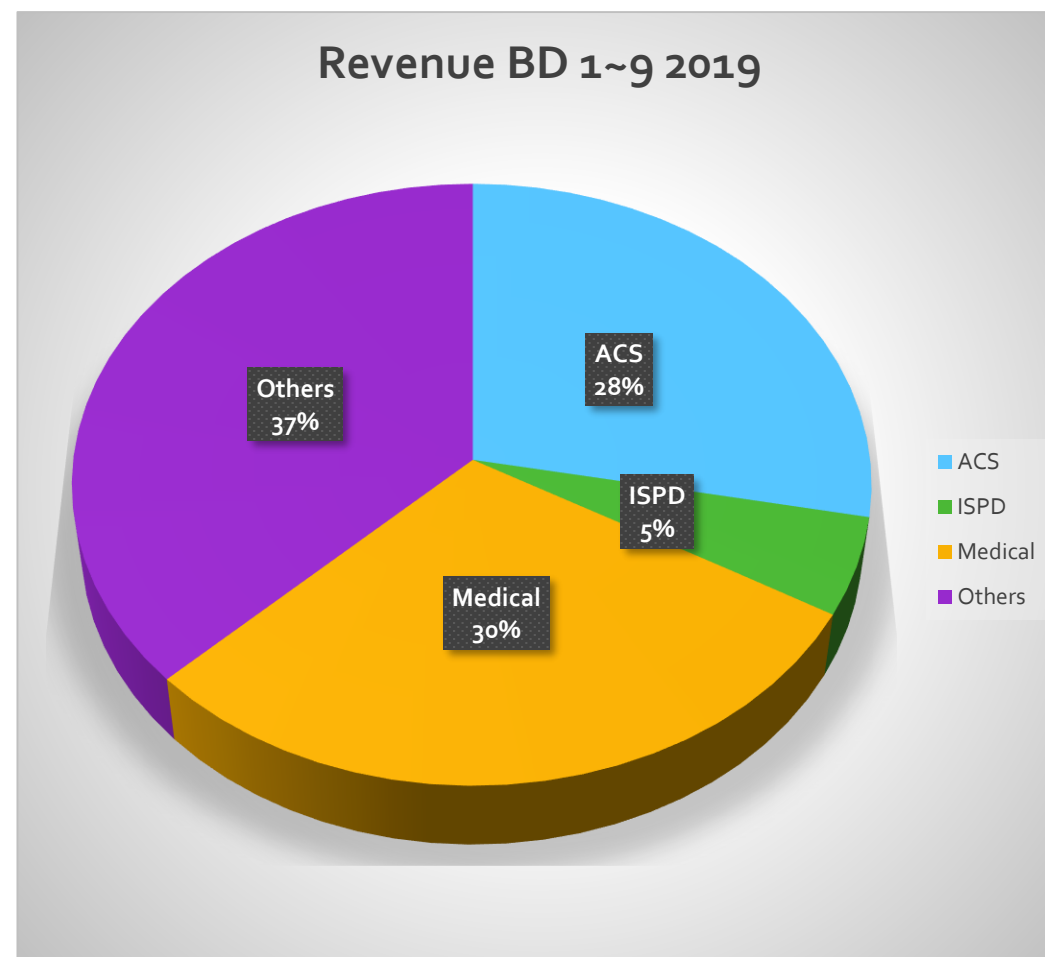
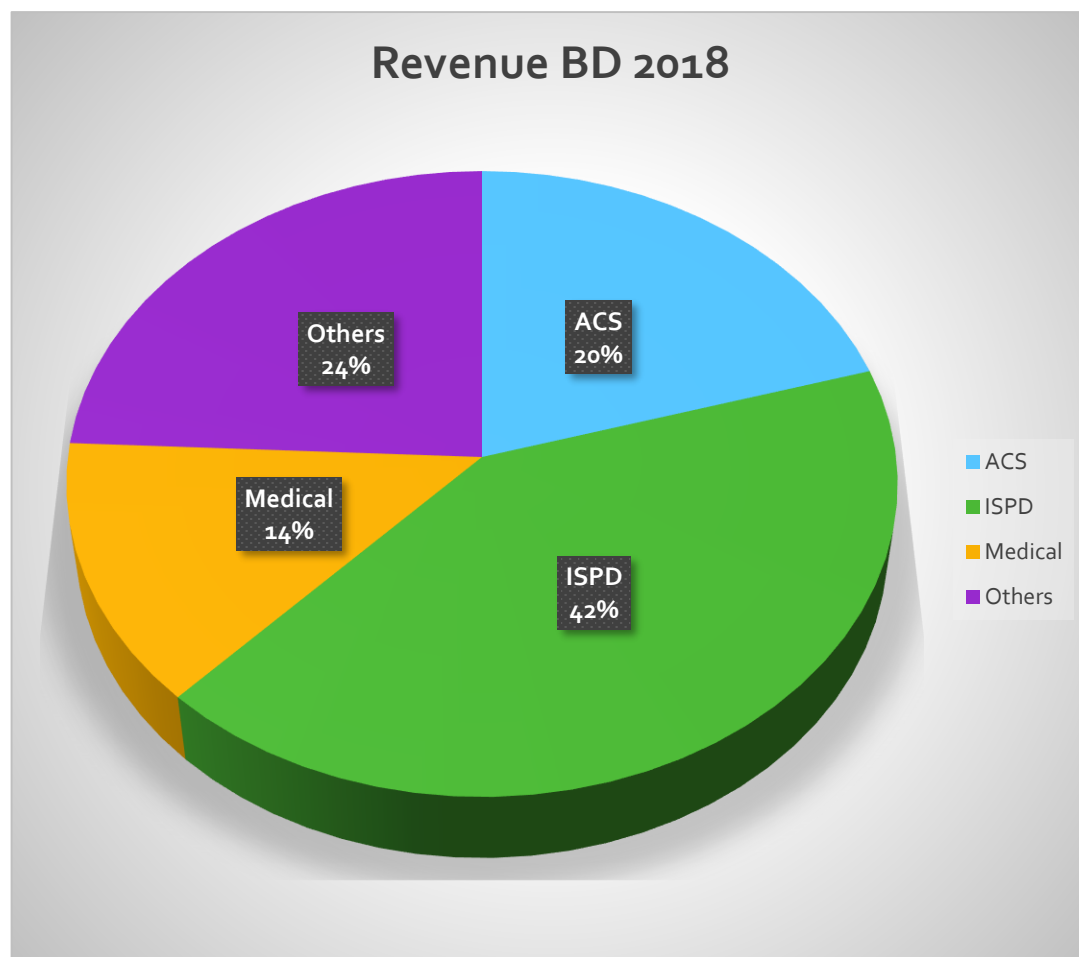
2018年 vs 2019年 Monthly Revenue



Gross profit margin trending up



Revenue BD 2018年 vs 2019年 1~3Q



Q3 consolidated income statement

Unit : NT/000

	2019/Q3		2018年Q3		Change Amount
	Amount	%	Amount	%	
Sales revenue	1,575,695	100	3,086,368	100	(1,510,673)
Operating costs	(1,308,471)	(83)	(2,711,453)	(88)	1,402,982
Net operating margin	267,224	17	374,915	12	(107,691)
Operating expenses	(292,483)	(19)	(322,299)	(10)	29,816
Operating profit(loss)	(25,259)	(2)	52,616	2	(77,875)
Non-operating income and expenses	58,247	4	69,855	2	(11,608)
Profit before income tax	32,988	2	122,471	4	(89,483)
Income tax expense	(20,148)	(1)	(39,772)	(1)	19,624
Profit for the period	12,840	1	82,699	3	(69,859)
Profit attributable to owners of the parent	38,260	3	80,015	3	(41,755)
Profit of non-controlling interest	(25,420)	(2)	2,684	-	(28,104)
Basic earnings per share	0.14		0.29		

1~3Q consolidated income statement

Unit : NT/000

	2019年1-9		2018年1-9		Amount Changed
	Amount	%	Amount	%	
Sales revenue	4,796,484	100	8,877,914	100	(4,081,430)
Operating costs	(4,016,577)	(84)	(7,846,406)	(88)	3,829,829
Net operating margin	779,907	16	1,031,508	12	(251,601)
Operating expenses	(863,307)	(18)	(911,353)	(11)	48,046
Operating profit(loss)	(83,400)	(2)	120,155	1	(203,555)
Non-operating income and expenses	141,588	3	118,440	2	23,148
Profit before income tax	58,188	1	238,595	3	(180,407)
Income tax expense	(38,453)	(1)	(68,716)	(1)	30,263
Profit for the period	19,735	0	169,879	2	(150,144)
Profit attributable to owners of the parent	83,052	1	109,062	1	(26,010)
Profit of non-controlling interest	(63,317)	(1)	60,817	1	(124,134)
Basic earnings per share	0.30		0.40		

Simple balance sheet

Unit : NT/000

	2019.09.30		2018.09.30	
	Amount	%	Amount	%
Cash and cash equivalents	6,930,860	48%	5,809,297	34%
Financial assets	379,976	3%	771,017	4%
Accounts receivable	1,179,033	8%	4,823,199	28%
Inventories	900,440	6%	1,049,008	6%
Current assets-other	181,793	1%	176,837	1%
Current Assets	9,572,102	66%	12,629,358	73%
Non-current assets	4,831,864	34%	4,610,466	27%
Total assets	14,403,966	100%	17,239,824	100%
Short-term borrowings	2,389,882	17%	1,844,814	11%
Accounts payable	1,066,684	7%	3,912,787	23%
Current liabilities-other	773,593	5%	704,835	3%
Non-current liabilities	728,563	5%	1,182,815	7%
Total Liabilities	4,958,722	34%	7,645,251	44%
Total equity	9,445,244	66%	9,594,573	56%
Total liabilities and equity	14,403,966	100%	17,239,824	100%

Thank You

altek