

altek

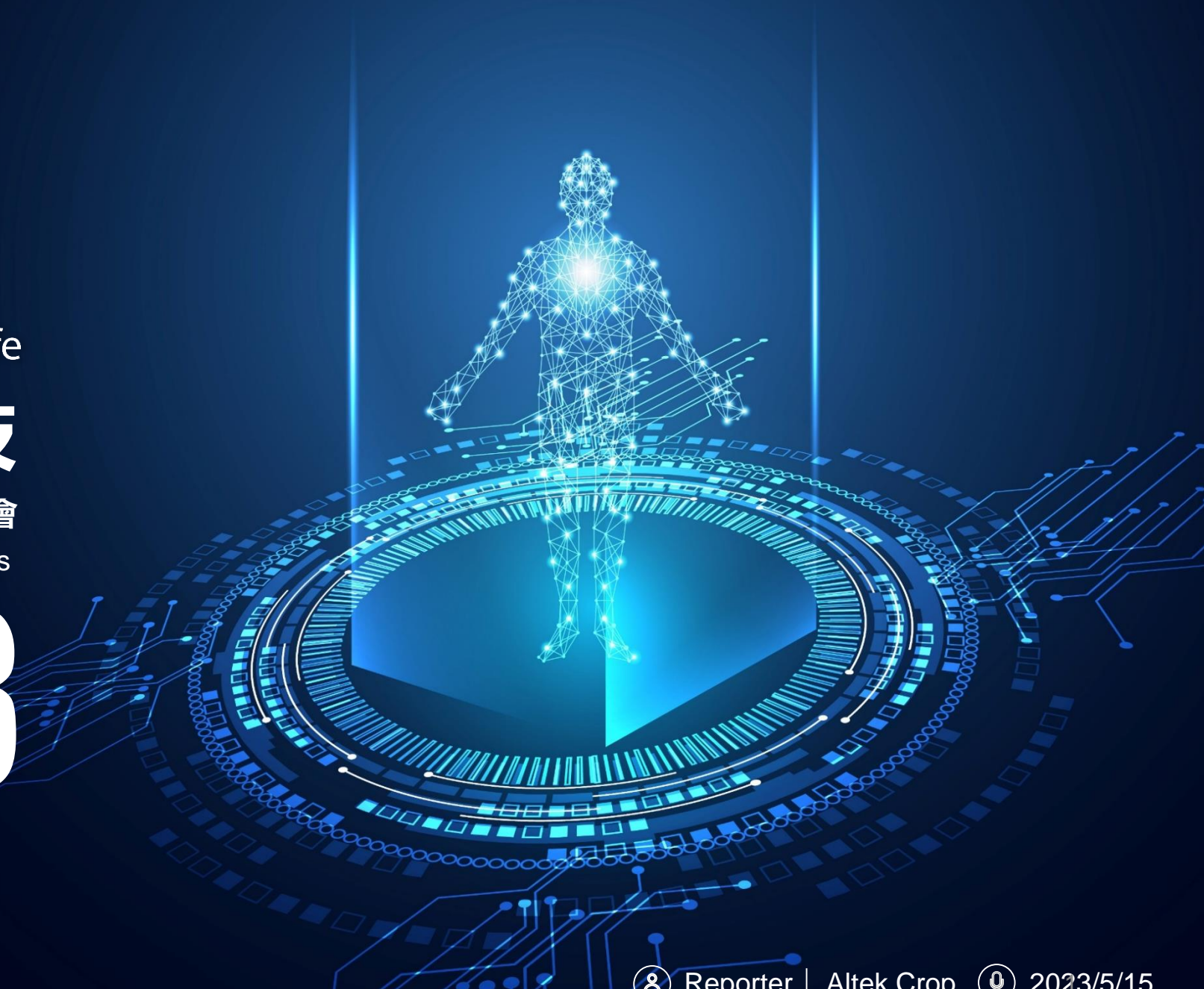
Better Vision · Better Life

華晶科技

112年第1季財報法說會

Altek Group | Institutional Investors

2023



第一季合併損益表

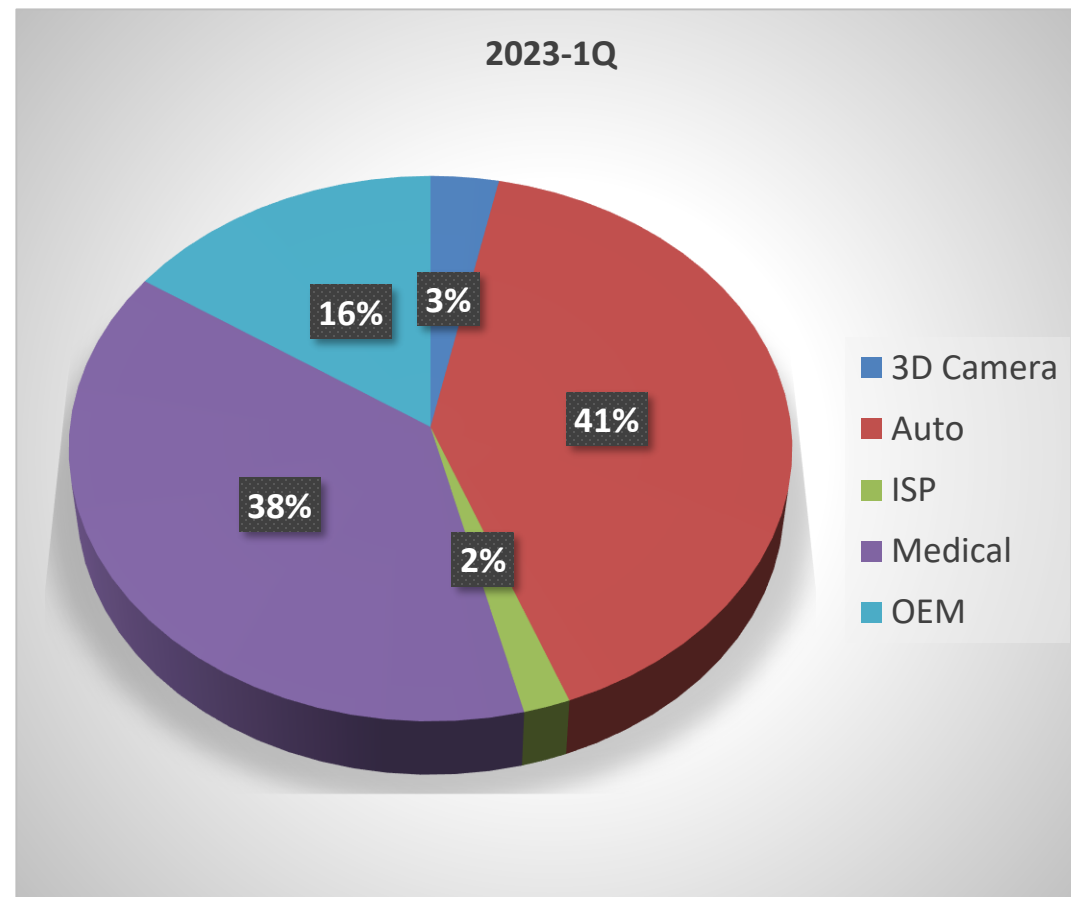
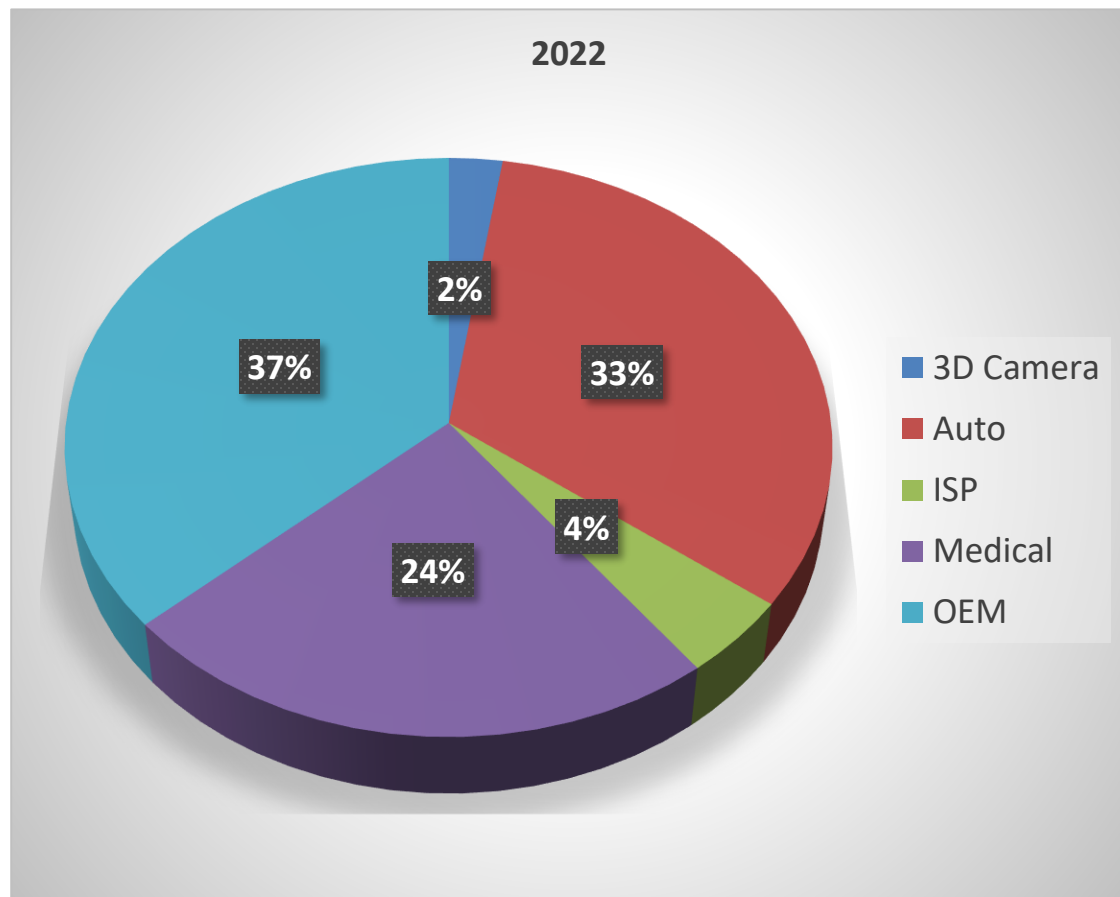
altek

Better Vision · Better Life

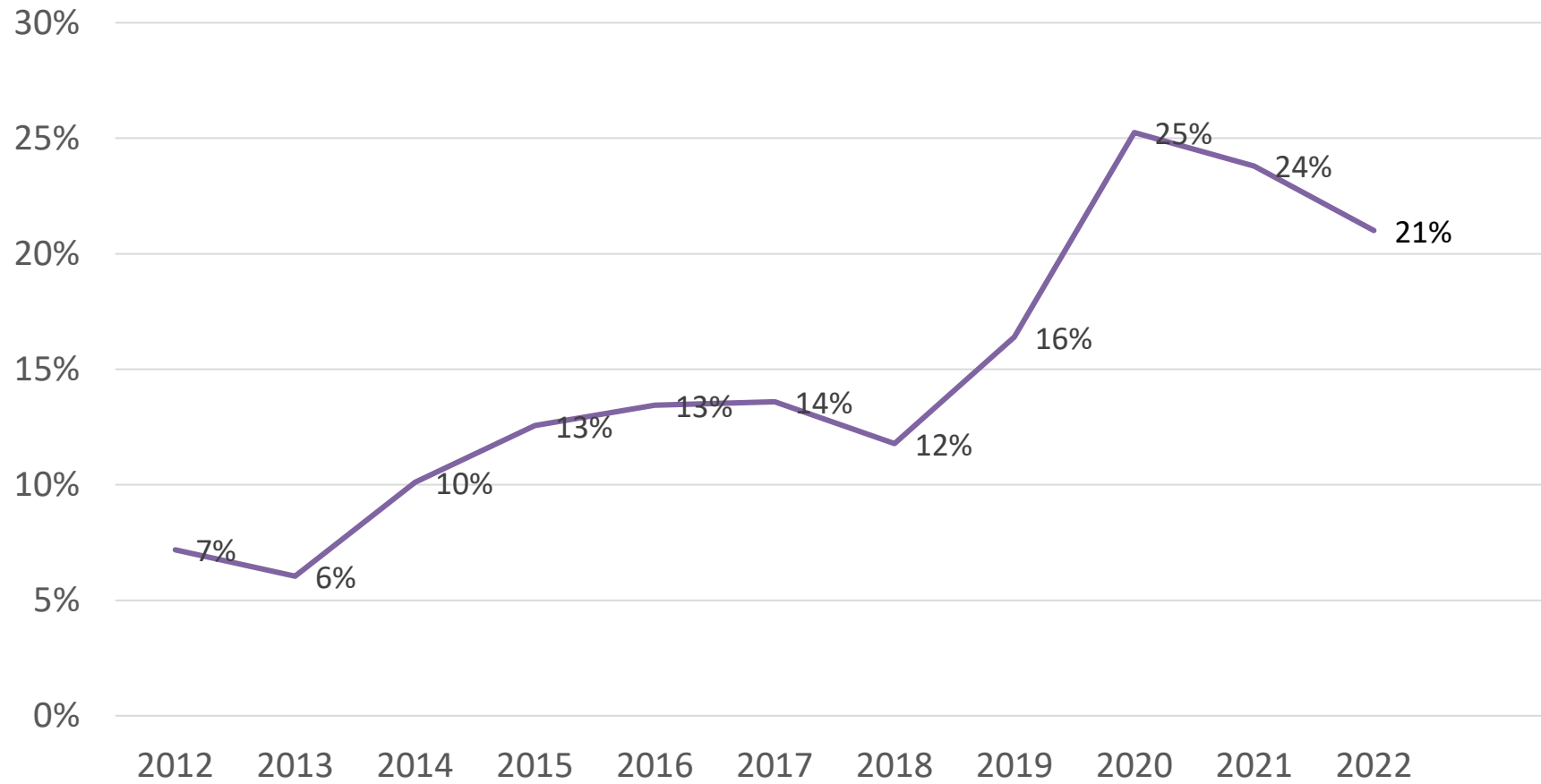
單位：新台幣仟元

項目	112年1-3月		111年1-3月		變動金額
	金額	%	金額	%	
營業收入	2,253,577	100	3,572,769	100	(1,319,192)
營業成本	(1,749,235)	(78)	(2,844,662)	(80)	1,095,427
營業毛利	504,342	22	728,107	20	(223,765)
營業費用	(442,077)	(20)	(631,975)	(18)	189,898
營業利益	62,265	2	96,132	2	(33,867)
營業外收入及支出	42,298	2	54,183	2	(11,885)
稅前淨利	104,563	4	150,315	4	(45,752)
所得稅費用	(30,828)	(1)	(39,050)	(1)	8,222
本期淨利	73,735	3	111,265	3	(37,530)
歸屬於母公司之淨利	66,356	3	123,263	3	(56,907)
非控制權益之淨利	7,379	0	(11,998)	0	19,377
基本每股盈餘	0.24		0.46		

營收比重

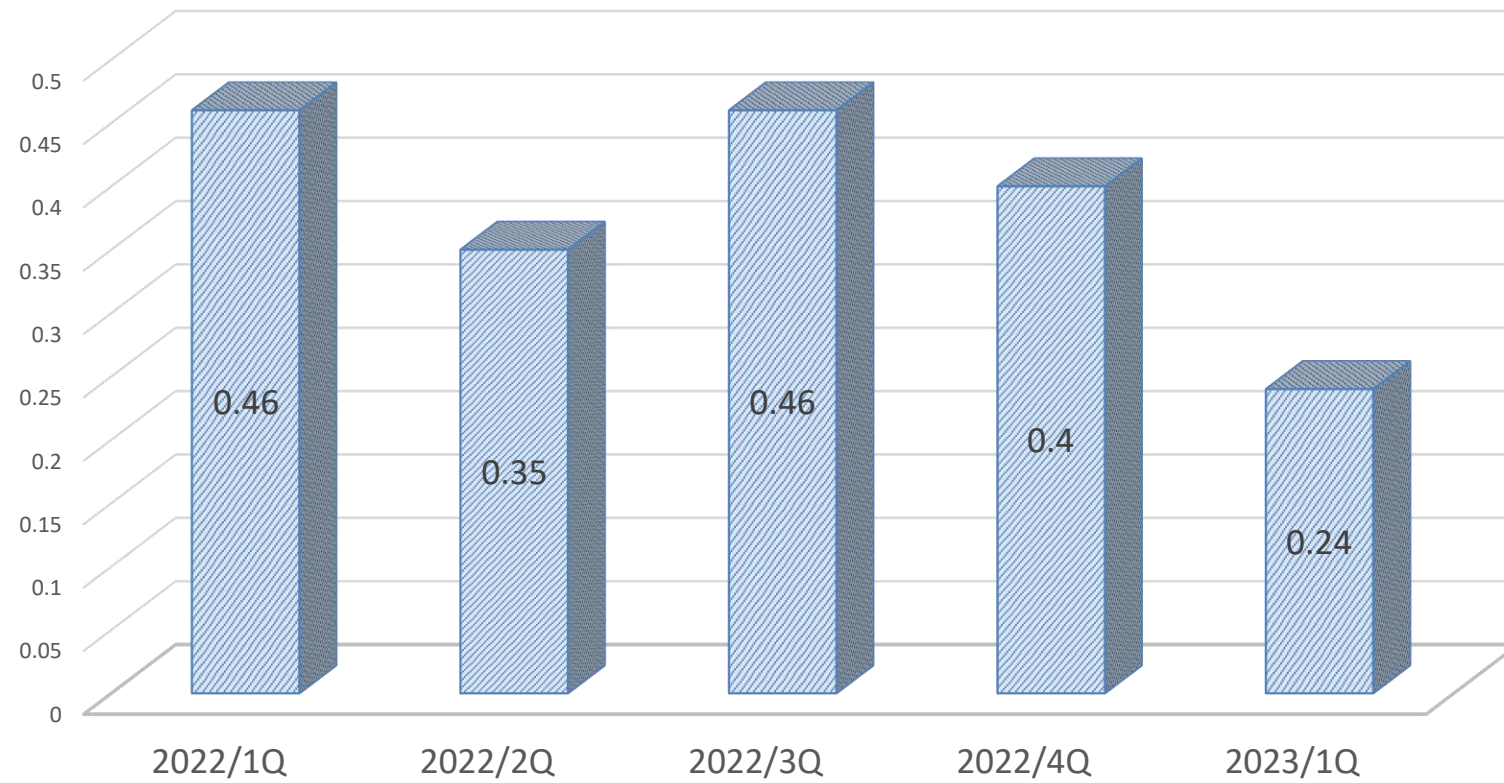


毛利率趨勢



每季EPS 比較

單位：新台幣仟元



Altek Group is delivering the world-class vision design and manufacturing across consumer electronic, automotive, healthcare, security and industrial applications.

Altek Corporation
華晶科技

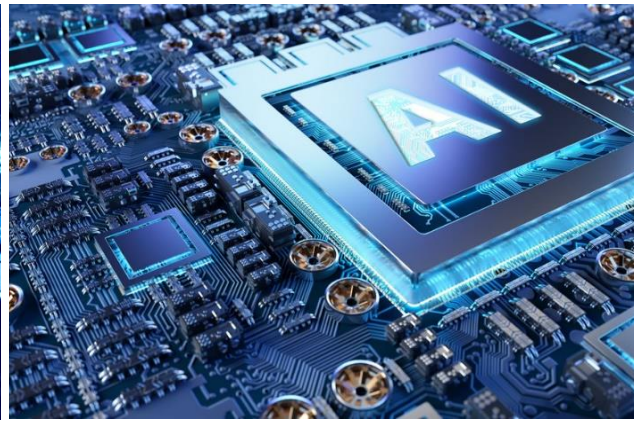
Altek Semiconductor
聚晶半導體

Altek Medical
榮晶醫療

Altek KunShan
彩晶光電



Automotive



ISP · AI · 3D



Healthcare



Precision manufacturing

AI 進行式 | 從光學影像到人工智慧



altek Imaging expert



Automotive



Electric Vehicle



Healthcare Devices

Biotechnology

Robotics



altek
Ecosystem services

Vision AI



Robotics

Metaverse



Consumer Electronics



IoT

從消費到車用、機器人&醫療

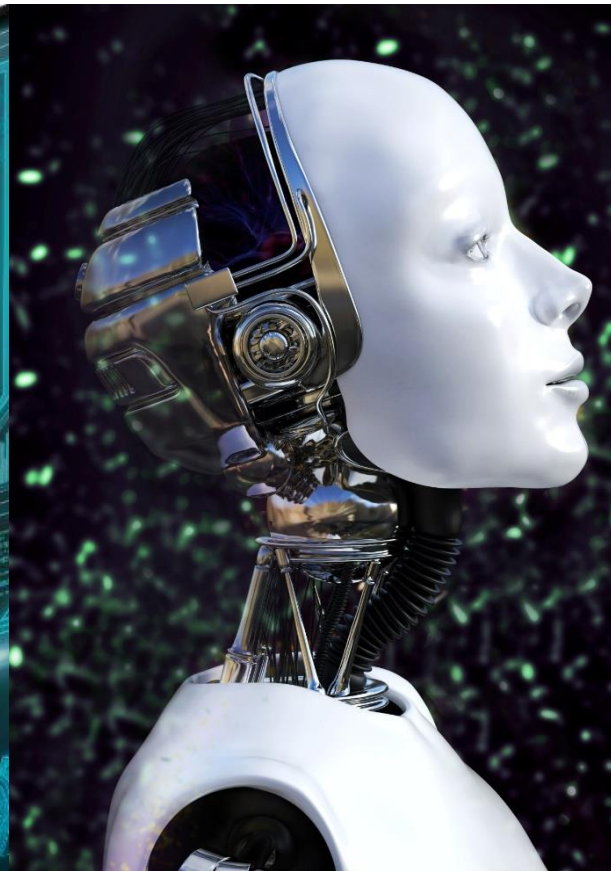
- 華晶科技將其影像處理的核心技術應用於四大智能影像解決方案



AIoT



智慧車



機器人



精準醫療

made with
Qualcomm
Technologies

altek
Dash Cam

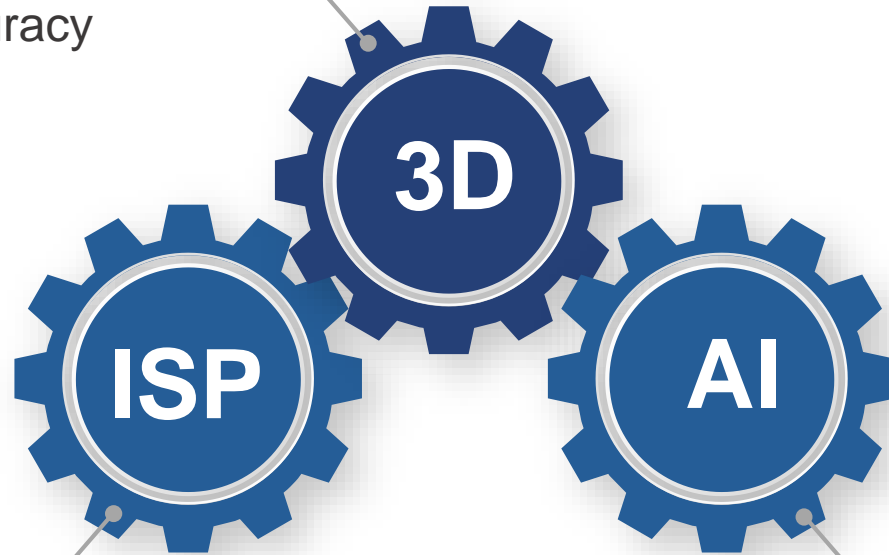


Altek Dash Cam powered by
Qualcomm® QCS6490
System-on-Chip



聚晶半導體 AI、ISP、3D之核心競爭力

- Industrial level robustness and accuracy
- In-house pattern projecting chip



- Over 20 years of image processing know-how
- Most comprehensive image IP offering

Leading in “Always On” and
“Low Power” segment

AIoT (AI+IoT) 智慧聯網解決方案

IP offerings

“Always ON” AI+ISP IP

Edge AI IP
(proprietary neural network engine)

3D sensing IP

Core ISP IP

Product applications



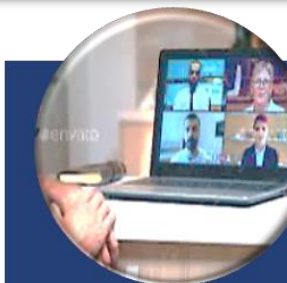
Automotive



Metaverse



IoT, Industrial
& Robotics



NB/PC



Smartphone

AI Powered Solutions



altek

3D Series | RobotEye



3D Depth Camera | Stereo Solution

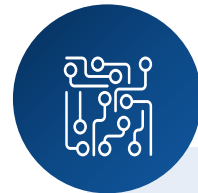


3D Series – Robot Eyes



認證為工業應用之領導廠商

3 years of rigid testing and trials in industrial robotics, ready for large-scale deployment



精準及堅固

Real-time high resolution (HD) depth map generation; up to 720p, 30FPS



高性價比

In-house developed pattern projecting chip (embedded in AL6100)

Metaverse VR headset

Outdoor package delivery robot

Warehouse automation robot

應用場景





altek MED



- We developed an all-in-one BGM solution integrating into one single device that brings daily convenience to diabetes patients.
- Improves diabetes patients quality of life. According to the F&S Report, this integrated product model is one of the three insulin patch pump models commercialized in the world to date.



- Ingle-use Endoscopy Products for Diagnostics and Surgical Application
- Our R&D and precision manufacturing abilities enabled the accelerated adoption of single-use bronchoscope globally



altek

Better Vision · Better Life
112年第1季財報法說會

Q&A

Altek Group | Institutional Investors

